

# Conference Handbook

## TASA Conference

### 28 November to 2 December 2022



# Contents

Information	1
Registration Desk	1
Wi Fi login	1
Session room computer login	1
‘Whova’ Conference App:	1
Security	1
COVID-19	1
First Aid	1
Mental Health First	1
Defibrillators	1
ATMs:	1
• Commonwealth Bank ATM	1
• Bendigo Bank ATM	1
• ANZ ATM	1
• NAB ATM	1
Quiet Space	2
Family Space:	2
Lactation Space Booking	2
Faith Space	2
Baby Change Table	2
Executive Committee 2021 - 2022	6

<b>Keynote Speakers</b>	<b>12</b>
<b>Professor Barbara Prainsack</b>	
<b>The roots of neglect: Towards a sociology of non- imagination</b>	
<b>Dr Samantha Crompvoets</b>	
<b>Sociology at the Edge</b>	
<b>Professor Yin Paradies</b>	
<b>Indigenous perspectives on decolonial societies</b>	<b>13</b>
<b>Professoriate Meeting</b>	<b>14</b>
<b>Presidential Address</b>	<b>14</b>
<b>Annual General Meeting</b>	<b>14</b>
<b>Thematic Group Conveners' Meeting</b>	<b>14</b>
<b>TASA Teatime</b>	<b>14</b>
<b>Remembering Stephen Castle</b>	<b>14</b>
<b>Thematic Group Annual Meetings</b>	<b>15</b>
<b>Remembering Stephen Castles</b>	<b>17</b>
<b>Social Events</b>	<b>18</b>
<b>Book Launches</b>	<b>20</b>
<b>Congress Shared Events</b>	<b>21</b>
<b>Venue</b>	<b>22</b>
<b>Melbourne</b>	<b>28</b>
<b>Program</b>	<b>32</b>

# TASA 2022 is part of the inaugural Congress of HASS

[CHASS](#) is very excited to be bringing together many of the major discipline association events for this year in the Humanities, Arts and Social Sciences (HASS) sector under the one banner.

## Participating associations:

- The Australian Sociological Association
- Academy of the Social Sciences in Australia
- Deans of Arts Social Sciences and Humanities
- Cultural Studies Association of Australasia
- Association for Medieval and Early Modern Studies
- Australasian Association of Philosophy
- Australian Historical Association
- Australian Anthropological Society
- Australian Linguistic Society
- Australian Society for Continental Philosophers
- Australian Women's and Gender Studies Association
- Languages and Cultures Network for Australian Universities
- Australian and New Zealand Association for Medieval and Early Modern Studies
- Australian Centre of Excellence for the History of Emotions
- Australian Association for the Study of Religion
- Australian and New Zealand Association of Theological Schools
- Australian University Heads of English
- Drama Victoria
- Humanities 21
- Network of Associate and Deputy Deans
- SHAPE Futures EMCR Network

## Conference Convenor: Peta S. Cook (TASA Vice President)

### Professional Conference Organisers

Arinex Pty Ltd, as Conference Managers for The Australian Sociological Association (TASA) Conference, are pleased to welcome delegates to the event. We are positive you will find this a most rewarding experience. If we can be of any assistance, please see a staff member at the registration desk.

Email: [tasa2022@arinex.com.au](mailto:tasa2022@arinex.com.au)

# Information

**Registration Desk:** Foyer, Arts West Building, The University of Melbourne

**Wi Fi login:** Eduroam and guest. To access the guest Wi Fi, select '**Visitor**' from the list of available Wi Fi options and login with the below details:

Username: kphan1

Password: 8B!utA

**Session room computer login:** Username: kphan1 Password: 8B!utA

**'Whova' Conference App:** download the app via this [link](#). Invitation code: u84fa51z7e

**Security:** 8344 6666

**COVID-19:** Masks, hand sanitiser & RATs available at the registration desk

**First Aid:** All security staff are trained in first aid. Call 8344 6666.

**Mental Health First:** Sally Daly - 0425 728 392

**Defibrillators (external/automated):** Near 'Fire Indicator Panel' close to Room 122

**ATMs:** There are four ATM machines on the campus of the University of Melbourne.

- Commonwealth Bank ATM
- Bendigo Bank ATM
- ANZ ATM
- NAB ATM



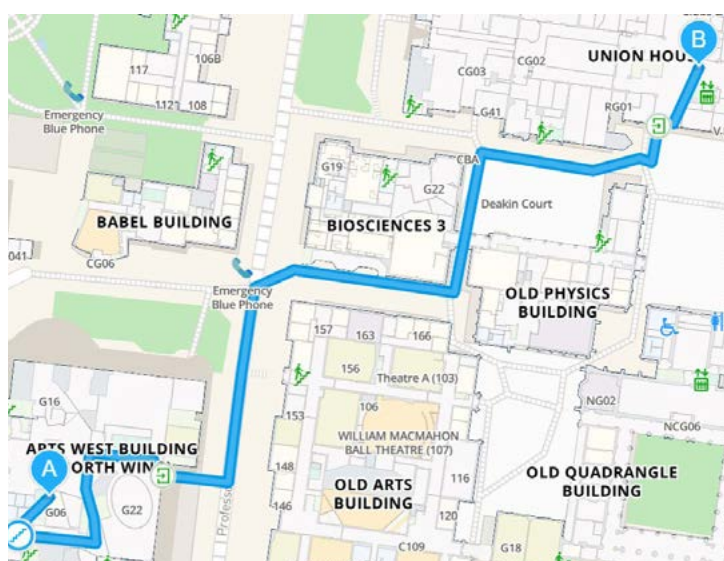
**Quiet Space:** Research Lounge, Level 5, Room 552, Room Arts West Building

**Family Space:** Old Arts Building (directly across from the Arts West Building) Level 2, Room 254

**Lactation Space Bookings:** Old Arts Building, Deans Office, Room 222

**Faith Space:** Old Arts Building (directly across from the Arts West Building), Level 2, Room 210.

**Baby Change Table:** Union Building. There are electricity points, hot and cold water, table, hand washing and drying facilities, toilet next door, table, rubbish bin, comfortable chairs, microwave and refrigerator. See map below for how to get there from the Arts West Building.



## COVID-19

We continue to live in a pandemic. While mandatory reporting of positive RAT results to COVID-19 is no longer necessary across various Australian states/territories, vigilance remains important.

TASA highly recommends and strongly encourages conference attendees to:

1. Be up-to-date with COVID-19 vaccinations, including 3rd and 4th doses. Vaccination does not stop individuals from contracting COVID-19, but it does help prevent severe disease.
2. Test if you are unwell and, if you are positive for COVID-19, do not attend the conference and isolate to help protect others.
3. Wear a mask indoors (preferably a N95, P2, KN95 or KF94 mask) when in close contact with others.
4. Keep doors and windows open for ventilation and to maximise air flow.
5. Maintain physical distancing when possible, and practice good hand hygiene (for example, regularly using hand sanitiser).

You can stay up-to-date with the latest COVID-19 news in Victoria at the following [website](#):

## Privacy Statement

The Australian Sociological Association (TASA) is committed to providing its members and event delegates with an experience that respects their personal privacy concerns. Our privacy policy and practices have been developed to comply with the Australian Privacy Act 1988, including its amendment in 2014, and the Spam Act 2003. To access TASA's privacy policy, [click here](#).

## Accessibility

You can find out about accessible accommodation, activities and attractions and the best ways to get around in Melbourne and Victoria [here](#).

## Language

The official language of the conference is English.

## Child Friendly Conference

TASA conferences are child friendly, and child/ren are welcome to attend for free

- if bringing children, please bring items they will require for entertainment
- as part of the HASS Congress, parent/family room and lactation spaces will be available (Level 2, Room 254)
- note TASA social events are not appropriate for children

For childcare centre information and other child minding services close to the University of Melbourne, please see our spreadsheet on TASA 2022 Childcare Options.

## Intention to Photograph, Screenshot and Record

Attendees are advised that photographs and recordings of presentations may be taken during the conference and reproduced for TASA promotional purposes. You can opt out, by emailing [tasa2022@arinex.com.au](mailto:tasa2022@arinex.com.au) and we will do our best to ensure you are not included in the photographs or recordings. Note that no conference presentation will be recorded by TASA without the explicit consent of the presenter/s. Conference attendees should not record (audio/video/images) any presentations, including taking photos and/or screen shots of presenter slides, without the explicit and informed consent of the session chair and presenter/s.

## Behavioural Code of Conduct at TASA Conferences and other events

TASA is dedicated in providing a harassment-free experience for everyone involved with a TASA event (online and in-person), regardless of sex, gender, gender identity and expression, sexuality, disability, physical appearance, body size, ethnicity, culture, race, age or religion. TASA does not tolerate harassment in any form at its conferences and other events. Unless relevant to the particular presentation, sexual language, imagery or derogatory language or behaviour will not be accepted and will be acted upon.

## TASA has the expectation that:

Event participants (this includes employees, volunteers, visitors, guests, sponsors etc) or anyone interacting with the event will engage with each other in a manner which is fair and respectful

Event participants will not knowingly treat one another in a manner which violates this principle, or another members' professional welfare – real or potential

Critical conversations should be undertaken in a respectful, supportive, and collegial manner, which does not involve personal denigration



Conference and event participants (this includes employees, volunteers, visitors, guests, sponsors etc) or anyone interacting with the conference/event that do not act appropriately may be sanctioned or expelled from the conference/event without a refund (if applicable) at the discretion of TASA and/or TASA conference organisers.

For additional information, please see TASA's Values Statement, Code of Conduct, Equity & Inclusion Policy, and Grievance Procedures.

TASA 2022 is being supported by the Melbourne Convention Bureau (MCB) ([www.melbournecb.com](http://www.melbournecb.com))

Twitter: @MelbConventions; #meetinmelbourne #visitmelbourne #visitvictoria



# Executive Committee 2021 - 2022

TASA's Executive Committee (EC) governs the Association and manages its daily business as outlined in the Constitution and by established policies.

## President: Alpha Possamai-Inesedy

Alpha Possamai-Inesedy is an Associate Professor of Sociology at the Western Sydney University. She was the editor in chief of the *Journal of Sociology* (2013- end of 2016) as well as the co-creator of the Risk Societies Thematic Group within the Australian Sociological Association. She has worked as an Associate Pro-Vice Chancellor of Academia and was responsible for the creation of the Master of Research at WSU (the first centralised degree of the University). Her recent work includes *Sociology: A Down-to-Earth Approach* (with Henslin and Possamai, 2014, Pearsons); as well as upcoming books on Digital Methods and examining religion through the digital (Sage and deGruyter). Alpha is currently involved in ongoing research that focuses on risk society, religion, and methodologies.



## Vice-President: Peta Cook

Dr Peta Cook is a Senior Lecturer of Sociology at the School of Social Sciences, Faculty of Arts. She is a sociologist of knowledge, with a specific focus on ageing, medical science, health and illness, and identity and embodiment. Her research is primarily concerned with what forms of knowledge count and why; how this knowledge is produced; and personal mean-making and experiences of ageing, and health and illness. She has wide expertise in qualitative research methods, including interviews, focus groups, observation, discourse analysis, and photography. Experienced at sole and collaborative research, Peta frequently works in disciplinary and cross-disciplinary teams.



## Secretary: Kay Cook

Kay Cook is an Professor in Sociology at Swinburne University of Technology and a current ARC Future Fellow. She has been a long-term member of TASA, having previously convened what was then the Families, Relationships and Gender thematic group. Kay has served as the research director for the Department of Social Sciences and now the School of Arts, Social Sciences and Humanities at a university that foregrounds the technological, physical and health sciences. She has a strong appreciation for the challenges facing the social sciences and humanities, and have successfully advocated for the social sciences at Swinburne.



## Treasurer: Anna Hickey-Moody

Anna is a Professor of Media and Communication at RMIT University and an Australian Research Council Future Fellow 2017-2021. She brings leadership experience from previous work at Goldsmiths College, The University of Sydney, Monash and UniSA. Anna is known for her theoretical and empirical work with young people with disabilities, young refugees and migrants, and men at the margins of society. Her books include *Deleuze and Masculinity* (Palgrave, 2019) *Imagining University Education* (Routledge, 2016), *Youth, Arts and Education* (Routledge, 2013), *Unimaginable Bodies* (Sense Publishers, 2009) and *Masculinity Beyond the Metropolis* (Palgrave, 2006).



Anna is an ethnographer who is committed to advancing the public understanding of the value of sociology and, more broadly, raising public awareness of the social sciences and humanities in Australia. Anna believes that sociological research makes societies happier, healthier and more sustainable.

## Public Sociology: Roger Patulny

Roger Patulny is an Associate Professor of Sociology at the University of Wollongong. He researches emotions and emotion management, gender, social capital and social networks, loneliness, (un)employment and the future of work. He has published over 75 papers (articles, chapters, reports, Conversation pieces), and has completed ARC Grants on gendered social isolation and exclusion (DP: 2009-11), and social networks and emotional wellbeing of unemployed Australians (LP: 2015-18). He co-founded the Contemporary Emotions Research Network (CERN); the TASA Thematic Group on the Sociology of Emotions and Affect (TASA-SEA); has edited special editions on emotions for *AJSI* and *Emotion Review*; and recently published *Emotions in Late Modernity* (Ed) with Routledge. He has experience with public sociological engagement, having worked for the NSW government, been involved in evaluation research projects whilst working at the Social Policy Research Centre (SPRC) at UNSW (2008-2012), in the course of recent ARC Linkage work with employment service providers (LP: 2015-18), and in ongoing engagements with practitioners in the field of loneliness studies. He is also a committed social creative writer and poet, and recently founded and is lead editor of the online community writing magazine *Authora Australis*. His profile, publications and creative works are at: <http://rpatulny.com>



## Dorinda 't Hart: Postgraduate Portfolio Leader

Dorinda is a PhD candidate in the School of Social Sciences at the University of Western Australia. Dorinda's current research project is a qualitative interview-based examination of post-abortion stories, shared by Perth women. This project examines the exercise of agency by autonomous women towards an abortion decision.



Dorinda's research interests lie in qualitative methodology, including research ethics within sensitive research. She also has research interests in those things that impact women and families more broadly, as well as rural communities and social theory.

Twitter: [@dorinda\\_joy](https://twitter.com/dorinda_joy)

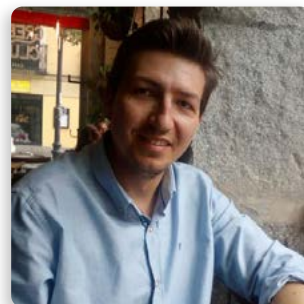
## Equity and Inclusion: Heidi Hetz

Heidi is a sociologist interested in refugee storytelling and (self-) representation. Her PhD, awarded in 2020, explored the impact of Australian asylum seeker debates upon refugee participants' storytelling about the refugee experience. At present, Heidi is working on two projects in refugee research. Since 2015, she has been a sessional teaching academic in the enabling program at UniSA College and she has lectured in sociology at undergraduate level. Heidi has also served as a postgraduate representative for the Migration, Ethnicity and Multiculturalism (MEM) thematic group at TASA. Prior to 2015, she worked and volunteered with newly arrived refugees for several years.



## Thematic Groups: Ramon Menendez Domingo

Ramon received his PhD in Sociology from La Trobe University in 2017; He has been a TASA member since 2013. His research interests look at authenticity and identity from a sociological perspective. Ramon has a number of open-access publications, and he has assisted other researchers with their academic publications, on this topic. He has also published interdisciplinary research on the impact of social stigma on knowledge production among sheep producers in Australia, collaborating with researchers from the fields of Microbiology and Veterinary Science. Ramon often uses mixed-methods in his research, as has is familiar with both quantitative and qualitative methodologies. In 2018, he joined the Department of Management, Sport and Tourism at La Trobe University (La Trobe Business School) as a casual academic, both in teaching and research assistant roles. He is currently teaching Strategic Management at this department.



## JoS Editor in Chief: Helen Forbes-Mewett

Helen Forbes-Mewett is Discipline Head of Sociology, School of Social Sciences and Deputy Director of the Monash Migration and Inclusion Centre. Helen's interdisciplinary background includes Sociology, Psychology and International Business, degrees all awarded by Monash University. Her work focuses on human security, migration, cultural diversity, and social cohesion, with a particular focus on international students. Since 2018, Helen has supervised to completion eight PhD theses. In addition, Helen is currently supervising 12 Higher Degree Research students from 10 different countries - all undertaking work relating to migration, international education/students and social inclusion. Read on...



## HSR Editors in Chief: Karen Willis

Karen Willis is Professor, Allied Health Research, La Trobe University and Melbourne Health. Her disciplinary background is in sociology and she has expertise in qualitative methodologies and methods. Her work examines the links between individual health behaviours and broader social and policy ideas. Karen has led, and been an investigator, on a range of competitive grants (See CV). She has published a textbook on Sociology for Nursing students (two editions); various book chapters and has consistently published in high quality peer reviewed journals across both health sciences and sociology (see CV). She is a regular contributor to The Conversation and is an active user of Twitter, to disseminate current research findings and contribute to contemporary debates.



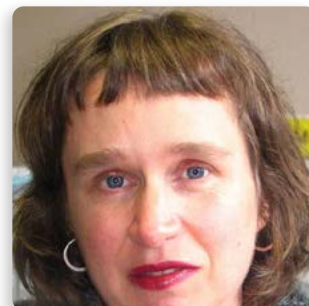
Karen has been a member of TASA since 1993; has taken part in many Annual Conferences in the Health Section and delivered a keynote address at the Health Thematic Group meeting in June 2015. She has published three articles in Health Sociology Review, has contributed book reviews, and acted as a reviewer for the journal on several occasions. Karen has peer-reviewed for a range of health and social science journals, including *Social Science and Medicine*, *Sociology of Health and Illness*, *Qualitative Health Research*, and *BMC Journals*. She is a panel member for the Steve Crook Memorial Prize (2014 and 2018). Karen is an active member of the RC15 the Health Thematic Group at ISA, organising sessions on sociological approaches to health care systems at both Vienna (2016) and Toronto (2018) ISA meetings. She organised a session at the European Sociology of Health and Medicine Society (ESHMS) in Lisbon in 2018. She is a regular attendee and presenter at the annual BSA Medical Sociology Conference. Her sociology networks include the UK (with UK collaborators on funded grants), US and Scandinavia (through the Bourdieu health capital research group).

Her previous appointments have included Associate Dean, Learning and Teaching, Faculty of Health Sciences, Australian Catholic University (2015-2017); Associate Dean, Learning and Teaching, Faculty of Health Sciences University of Sydney; Senior Lecturer, School of Sociology and Social Work, University of Tasmania (2006-2012).



## HSR Editors in Chief: Sarah MacLean

Sarah MacLean is a health sociologist employed as Senior Lecturer in the Discipline of Social Work and Social Policy (SWSP) at La Trobe University. Sarah is highly regarded for her work exploring various forms of substance use, and the development of appropriate policy responses to reduce associated harms. Her research identifies how experiences of marginality (Indigeneity, poverty, gender and sexuality) impacts on, and is in turn affected by, substance use. A further area of her academic expertise is in collaborative methods for community-based research. She has been awarded ARC, NHMRC and other funding and is currently a named investigator on two ARC Discovery projects. She held an ARC postdoctoral fellowship from 2010-2015. Prior to working at La Trobe University, Sarah was employed as a Senior Research Fellow at the Onemda Koori Health Unit at the University of Melbourne.



Sarah has been a member of TASA since 2000. She co-convened the TASA Youth Sociology thematic group from December 2011-January 2013. Sarah has served as an Associate Editor on *Health Sociology Review* since 2015. In this capacity she has managed book reviews and peer review for journal articles submitted to the journal and actively contributed to discussions on the future of *Health Sociology Review*. She has published in journals including *Sociology*, *Journal of Youth Studies*, *Addiction* and *Critical Public Health* (see attached CV). In addition, she has edited special editions of *Substance Use & Misuse* and the *Australian Journal of Primary Health* and is a regular reviewer of papers for a range of journals. Sarah's involvement will ensure continuity between the incoming and outgoing editorial teams.

## Digital Publications Editor: Roger Wilkinson

I studied undergraduate and postgraduate Sociology at La Trobe University before moving to James Cook University in North Queensland. I taught many subjects and travelled between campuses until video-conferencing offered a weak alternative to face-to-face teaching. Dissatisfaction with this mode of teaching led me to consider and develop podcasting. The rise of the iPhone and a chance meeting with a student led me to search for ways of embedding video-podcasts on smart phones. I then used this method to digitally grade essays by making movies. While there was little interactivity, it solved some problems and, in consultation with students, created other possibilities.



Recently retrenched, I decided to become a student again, completing a postgraduate qualification in Human Resource Management. Subsequently, I commenced postgraduate study in Digital Communications but have paused that study because I was frustrated with the content, teaching methods and backwardness of the literature. I may never return to that formal study but it has provided me with invaluable negative lessons about the experience of being a student in the digital age. These desire to keep learning, reading and developing my digital literacy attracted me to the position of digital publications editor at TASA.



## Immediate Past President: Dan Woodman

Associate Professor Dan Woodman is in the School of Social and Political Sciences at the University of Melbourne. As well as President of TASA he is Vice President for Australia, New Zealand and Oceania of the Research Committee for the Sociology of Youth within the International Sociological Association. His work focuses on the sociology of generations, social change, and the impact of insecure work and variable employment patterns on people's relationships. His recent books include *Youth and Generation* (Sage) and the four volume collection *Youth and Young Adulthood* (Routledge).



## Executive Officer: Sally Daly

Sally Daly studied Sociology at Swinburne before working part-time for TASA. Over the years, Sally's job has changed immensely with increasing computerisation and digitisation of professional membership associations, and more complex financial and reporting requirements. As Executive Officer, Sally has facilitated the growth and professionalisation of TASA as a peak body in the Social Sciences.

Sally has been central in organising conferences and liaising with Professional Conference Organisers. Sally also engages with overworked academics and precariously employed postgraduates and early career researchers, which helps to foster a spirit of community and empathy in a constantly changing environment for higher education and the social services sector where many sociologists now find rewarding careers.



Despite the attack on Universities, and most specifically, humanities and social science disciplines, Sally has helped TASA develop into a financially healthy, intellectually vibrant association that keeps abreast of developments; Sally lives the 'sociological imagination'.

# Keynote Speakers

## Professor Barbara Prainsack

*Head of Department at the Department of Political Science at the University Vienna*

### The roots of neglect: Towards a sociology of non-imagination

Thursday December 1, 2022

9:00 AM - 10:00 AM

Arts West building: Kathleen Fitzpatrick Theatre - Basement

Chair: Professor Karen Willis

Professor Barbara Prainsack is a professor and Head of Department at the Department of Political Science at the University Vienna, where she also directs the Centre for the Study of Contemporary Solidarity (CeSCoS), and the interdisciplinary Research Platform "Governance of Digital Practices". Her work explores the social, ethical, and regulatory dimensions of genetic and data-driven practices and technologies in biomedicine and forensics. Her latest books are: *Personalized Medicine: Empowered Patients in the 21st Century?* (New York University Press, 2017), and *The Pandemic Within: Policy Making for a Better World* (with H. Wagenaar, Policy Press, 2021). Barbara is also involved in policy-related work, e.g. as a member of the Austrian National Bioethics Commission, and the European Group on Ethics in Science and New Technologies, which advises the European Commission.



## Dr Samantha Cromptvoets

*Sociologist, entrepreneur, consultant and advisor to Australian and international governments and the private sector*

### Sociology at the Edge

Wednesday November 30, 2022

9:30 AM - 10:30 AM

Arts West building: Kathleen Fitzpatrick Theatre - Basement

Chair: Dr Catherine Hastings

Dr Samantha Cromptvoets is a sociologist, entrepreneur, consultant and advisor to Australian and international governments and the private sector on leadership, accountability, institutional misconduct, and integrating women into traditionally male dominated fields.



Her recent book *Blood lust, trust and blame* details her pivotal role in reporting allegations of war crimes by Australian Special Forces soldiers in Afghanistan and provides insights into how misconduct can spread and remain hidden in any organisation. She is a member of the NATO Research Task Group developing a code of best practice for conducting survey research in military contexts and is the author of 'Gender-responsive organizational climate assessments in Armed Forces', a guidebook for the security sector. Dr Cromptvoets has a BSc (hons) from the Uni of Melbourne, and a PhD from the National Centre for Epidemiology and Population Health at ANU.

## Professor Yin Paradies

*Chair in Race Relations, Deakin University*

## Indigenous perspectives on decolonial societies

Friday December 2, 2022

9:00 AM - 10:00 AM

Arts West building: Kathleen Fitzpatrick Theatre - Basement

Chair: Dr Laura Rodriguez Castro



Professor Yin Paradies is a Wakaya man who is Chair in Race Relations at Deakin university. He conducts research on the health, social and economic effects of racism, anti-racism theory, policy and practice as well as Indigenous knowledges and decolonisation. Yin is an anarchist ecological activist committed to interrupting the devastating impacts of modern societies. He seeks mutuality of becoming and embodied kinship with all life through transformed ways of knowing, being and doing grounded in wisdom, humility, respect, generosity, downshifted collective sufficiency, voluntary simplicity, frugality, direct participation and radical localisation.

## **Professoriate Meeting**

The Status of Sociology

Wednesday November 30th, 2022

12:30 PM - 1:30 PM

Arts West Building: Kathleen Fitzpatrick Theatre - Basement

## **Presidential Address**

Thursday December 1st, 2022

3:30 PM - 4:30 PM

Arts West Building: Kathleen Fitzpatrick Theatre - Basement

## **Annual General Meeting**

Thursday December 1st, 2022

4:30 PM - 5:30 PM

Arts West Building: Kathleen Fitzpatrick Theatre - Basement

## **Thematic Group Conveners' Meeting**

Wednesday November 30th, 2022

12:30 PM - 1:30 PM

Room 253

## **TASA Teatime**

Wednesday November 30th, 2022

10:30 AM - 11:00 PM

Room 161

## **Remembering Stephen Castle**

Thursday December 1st, 2022

2:30 PM - 3:00 PM

Arts West Building: Kathleen Fitzpatrick Theatre - Basement

Chair: Susan Banki

# Thematic Group Annual Meetings

Thursday December 1, 2022

12:00 PM - 1:00 PM

Arts West Building

## **Cultural Sociology**

*Arts West Building, Level 1, Room 161*

## **Sociology of Work, Labour & Economy**

*Arts West Building, Level 1, Room 156*

## **Media**

*Arts West Building, Level 2, Room 253*

## **Social Stratification**

*Arts West Building, Level 2, Room 263*

## **Genders & Sexualities**

*Arts West Building, Level 2 Room 256*

## **Sociology of Risk**

*Arts West Building, Level 3, Room 361*

## **Health Sociology**

*Arts West Building, Level 3, Room 356*

## **Critical Indigenous Studies**

*Arts West Building, Level 3, Room 354*

## **Applied Sociology**

*Arts West Building, Level 4, Room 453*

## **Crime & Governance**

*Arts West Building, Level 4, Room 454*

## **Sociology & Animals**

*Arts West Building, Level 4, Room 456*

## **Sociology of Education**

*Arts West Building, Level 4, Room 461*

## **Rural Sociology**

*Arts West Building, Level , Room 561*

Friday December 2, 2022

12:00 PM - 1:00 PM

Arts West Building

## **Critical Disability Studies**

*Arts West Building, Level 1, Room 161*

## **Social Theory**

*Arts West Building, Level 1, Room 156*

## **Migration, Ethnicity & Multiculturalism**

*Arts West Building, Level 2, Room 253*

## **Families & Relationships**

*Arts West Building, Level 2, Room 263*

## **Teaching Sociology**

*Arts West Building, Level 2 Room 256*

## **Sociology of Emotions and Affect**

*Arts West Building, Level 3, Room 361*



## Urban Sociology

*Arts West Building, Level 3, Room 356*

## Environment & Society

*Arts West Building, Level 3, Room 355*

## Sociology of Sport & Leisure

*Arts West Building, Level 4, Room 453*

## Sociology of Youth

*Arts West Building, Level 4, Room 456*

## Sociology & Ageing

*Arts West Building, Level 4, Room 461*

## Sociology of Religion

*Arts West Building, Level , Room 553*

## Sociology & Activism

*Arts West Building, Level , Room 561*

# Remembering Stephen Castles

In this blended session, friends and colleagues of the late Professor Stephen Castles will reflect on his life and work, remembering and celebrating his extraordinary impact on our discipline and on the world.

*Thursday 1 December, 2:30pm - 3:00pm AEDT*

*HYBRID EVENT*

REGISTER [here](#):



# Social Events

## Welcome Reception

The Welcome Reception is included in full registration.

Venue: Arts West Foyer, University of Melbourne

Date: Tuesday 29 November 2022

Time: 4:30pm - 6:30pm

Free for registrants (includes drinks and vegetarian/vegan canapés).

## Women's Breakfast

The Women's Breakfast is not included in your registration.

Speaker: Carol Vale

Venue: Arts Hall, Old Arts Building, Level 2, University of Melbourne

Date: Wednesday 30 November 2022

Time: 7:30am - 8:45am

Tickets: \$19.00 (includes a light vegetarian/vegan breakfast) (no additional tickets for guests available)

## Queer Drinks

The Queer Drinks is not included in your registration.

Venue: Evie's Disco Diner

Date: Wednesday 30 November 2022

Time: 7:00pm - 9:00pm

Tickets: \$15.00 (includes vegan food platters)

## Conference Dinner

The Conference Dinner is not included in your registration.

Venue: University House, University of Melbourne

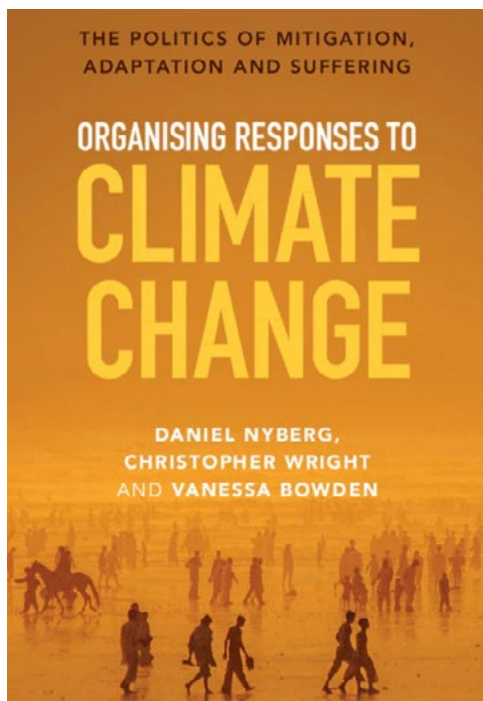
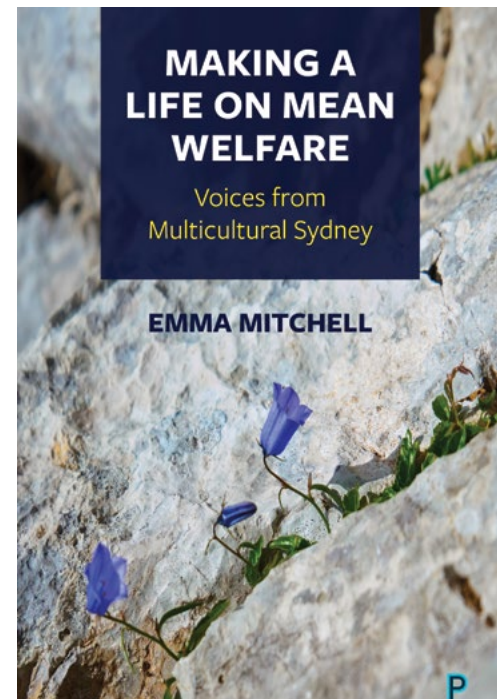
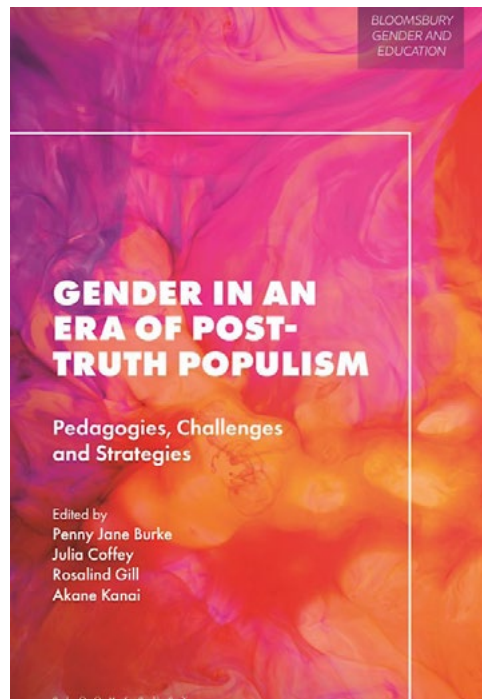
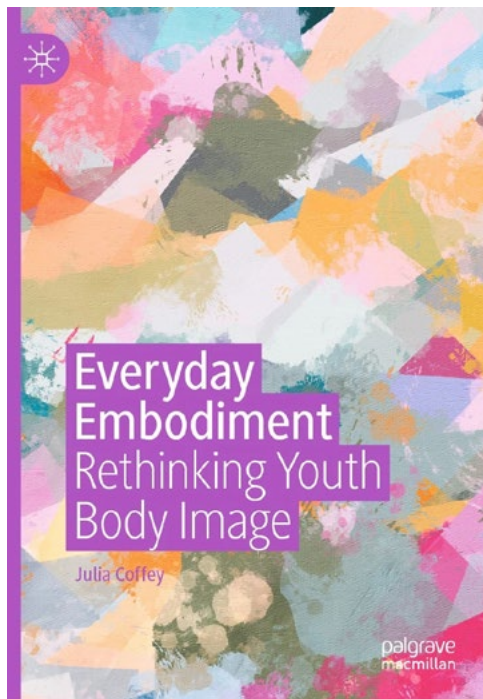
Date: Thursday 1 December 2022

Time: 7:00pm - 11:00pm

Tickets: \$99.00 (includes entrée, mains, dessert, tea/coffee with chocolates, non-alcoholic drinks, DJ)

MC: Karen Farquharson

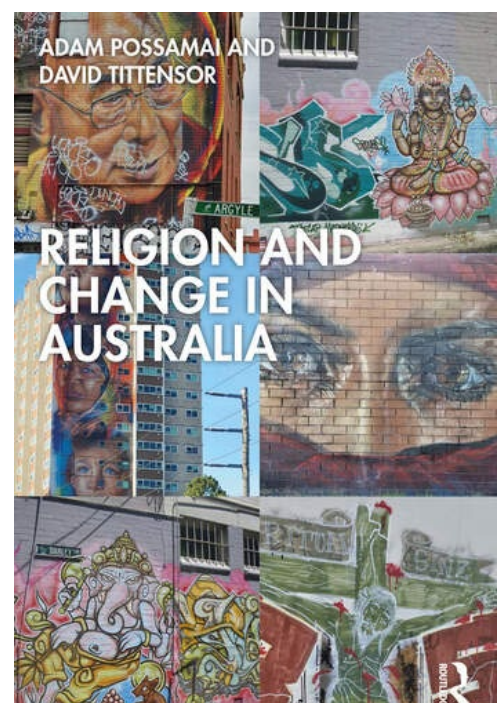
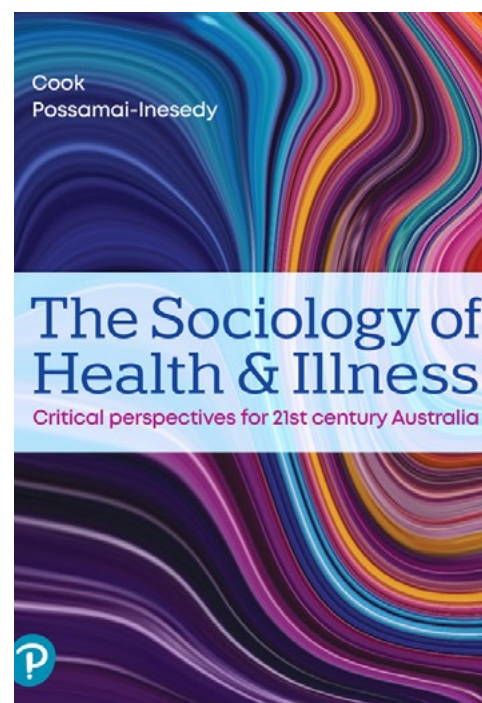
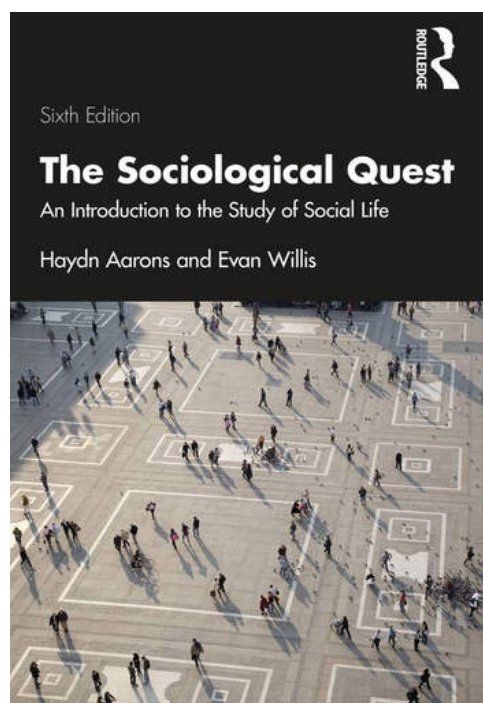
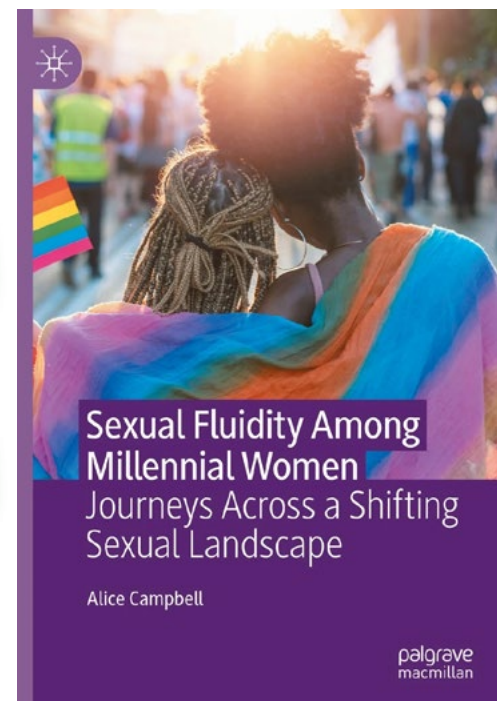




BOOK LAUNCHES

by

TASA MEMBERS



# Book Launches

Thursday, December 1st, 2:30pm - 3:00pm

## Room 356

Peta S. Cook and Alpha Possamai-Inesedy (eds.)

*Sociology of health and illness: Critical perspectives for 21st century Australia* (Pearson Australia)

## Room 156

Haydn Aarons and Evan Willis

*Sociological Quest: An Introduction to the Study of Social Life* (6th ed.) (Routledge)

## Room 256

Alice Campbell

*Sexual fluidity among millennial women: Journeys across a shifting sexual landscape* (Palgrave Macmillan)

## Room 253

Julia Coffey

*Everyday embodiment: Rethinking youth body image* (Springer)

and

Penny Jane Burke, Julia Coffey, Rosalind Gill, and Akane Kanai (eds.)

*Gender in an era of post-truth populism* (Bloomsbury Publishing)

## Room 453

Daniel Nyberg, Christopher Wright, and Vanessa Bowden

*Organising Responses to Climate Change* (Cambridge University Press)

## Room 456

Emma Mitchell

*Making a Life on Mean Welfare: Voices from Multicultural Sydney* (Policy Press)

## Room 461

Adam Possamai & David Tittensor

*Religion and Change in Australia* (Routledge)



# Congress Shared Events

In addition to the plethora of TASA sessions and events, CHASS is hosting an opening and closing event as well as four professional development events throughout the Congress. To register for any of the below events, click [here](#).

## Congress Opening Ceremony - HASS Changing the World

Sunday November 27th

4:00pm - 6:30pm

Arts West Building: Kathleen Fitzpatrick Theatre - Basement

**Ticket includes drinks & canapés. Free for students,/precariously employed/unemployed. \$15 for others 27/11/22 4pm**

## The Most Pressing Issues facing Early & Mid-Career Academics

Monday November 28th

1:30pm - 2:30pm

Arts West Building: Kathleen Fitzpatrick Theatre - Basement

## Social Ventures and the Translation of HASS Research

Tuesday November 29th

12:30pm - 1:30pm

Arts West Building: Kathleen Fitzpatrick Theatre - Basement

## HASS means Business

Wednesday November 30th

12:30pm - 1:30pm

Arts West Building: Kathleen Fitzpatrick Theatre - Basement

## HASS - Tracks out of COVID

Thursday December 1st, 2022

12:30pm - 1:30pm

Arts West Building: Kathleen Fitzpatrick Theatre - Basement

## Congress Closing Plenary - Making better futures

Thursday December 2nd, 2022

4:30pm - 6:00pm

Arts West Building: Kathleen Fitzpatrick Theatre - Basement

# Venue

## Arts West Building, University of Melbourne

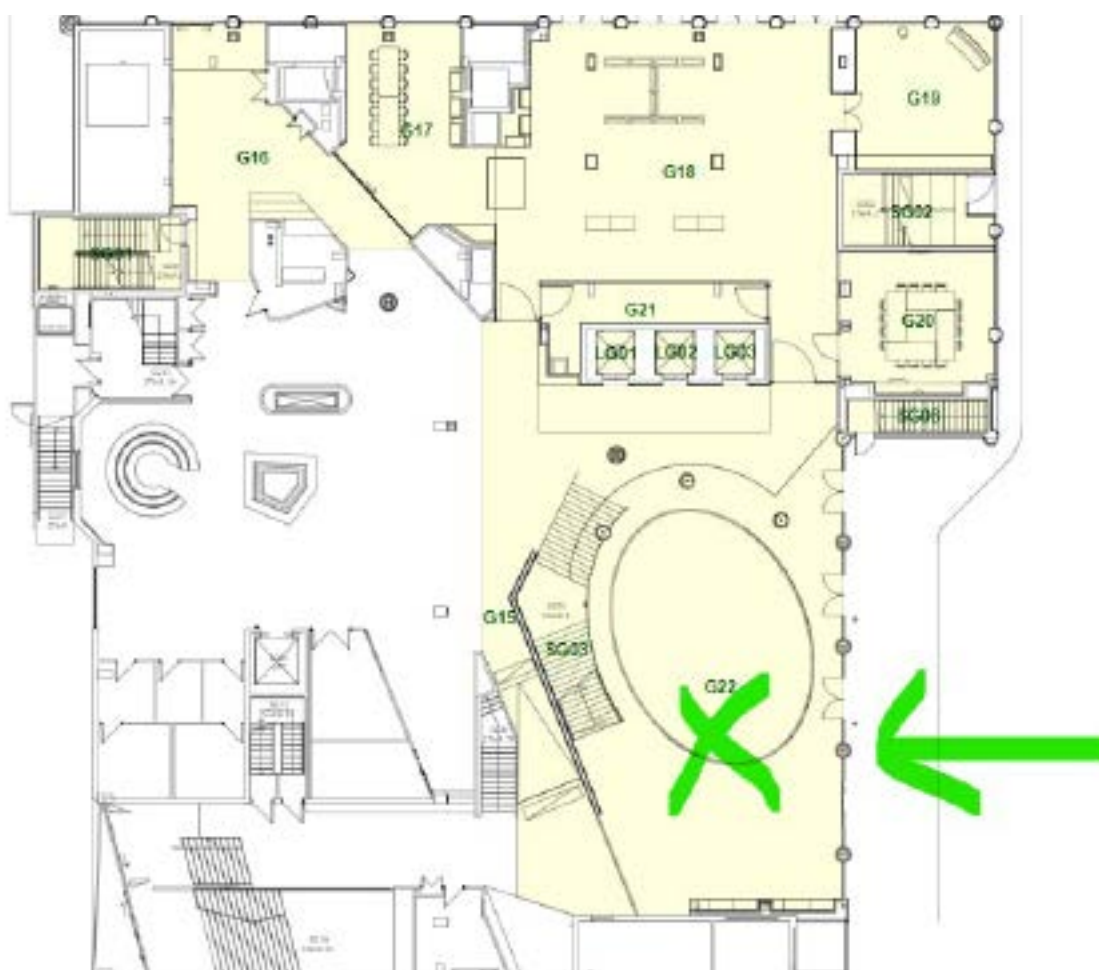
TASA 2022 will be held at the University of Melbourne, which is only a short walk or tram ride from Melbourne's city centre. The University of Melbourne's main Parkville campus is a well-known city landmark, with unique cultural, architectural and landscape features and facilities. The conference will be held in the Arts West Building which is known to enrich the educational experience of students and the broader community through meaningful exhibitions that showcase the value of the humanities, languages and social sciences.

Maps of each Arts West Building level can be found on the following pages.



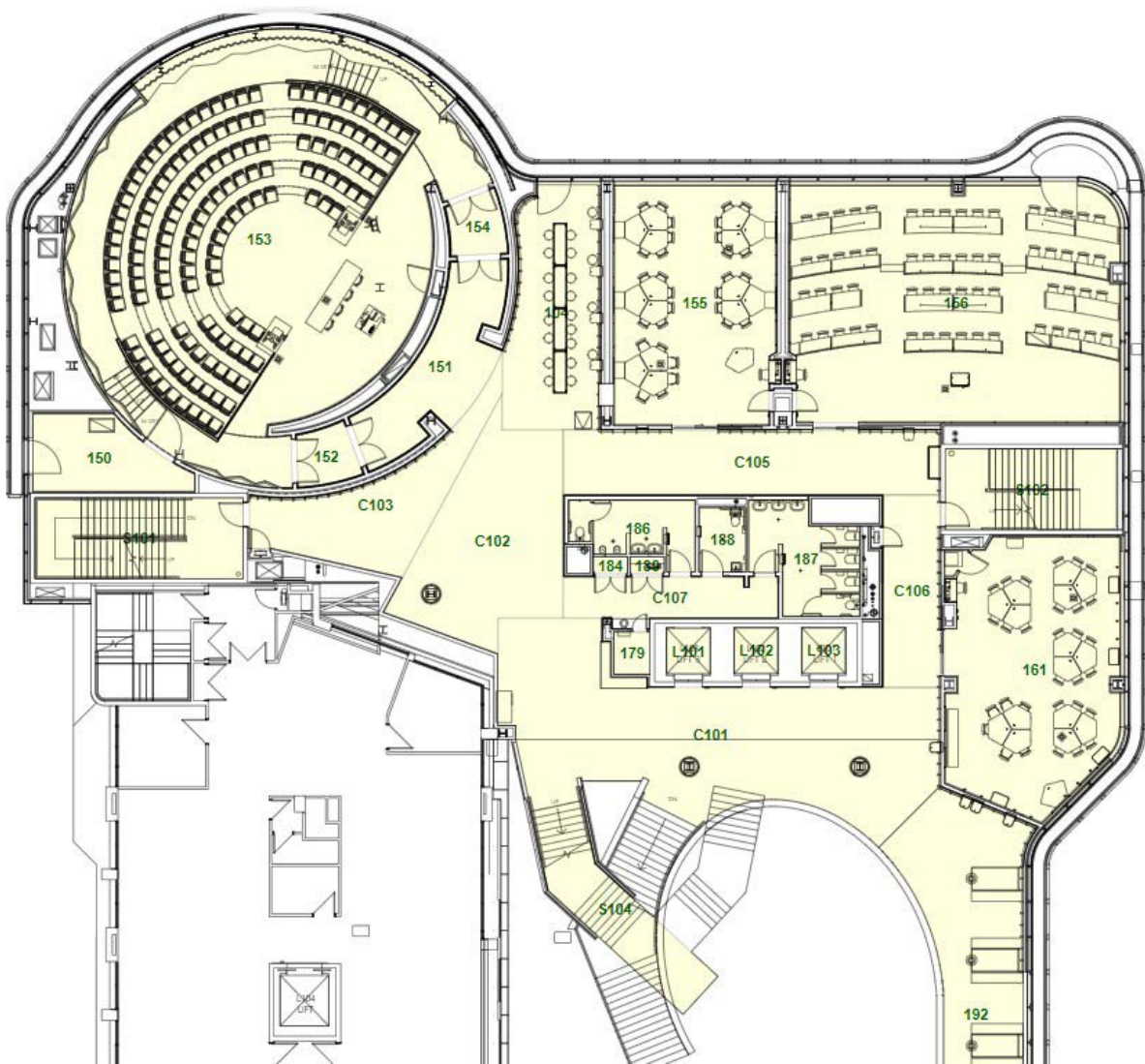
Entrance to Arts West Building

**Registration Desk:** You will find the registration desk in the Foyer of the Arts West Building, Ground Level (see green cross below).

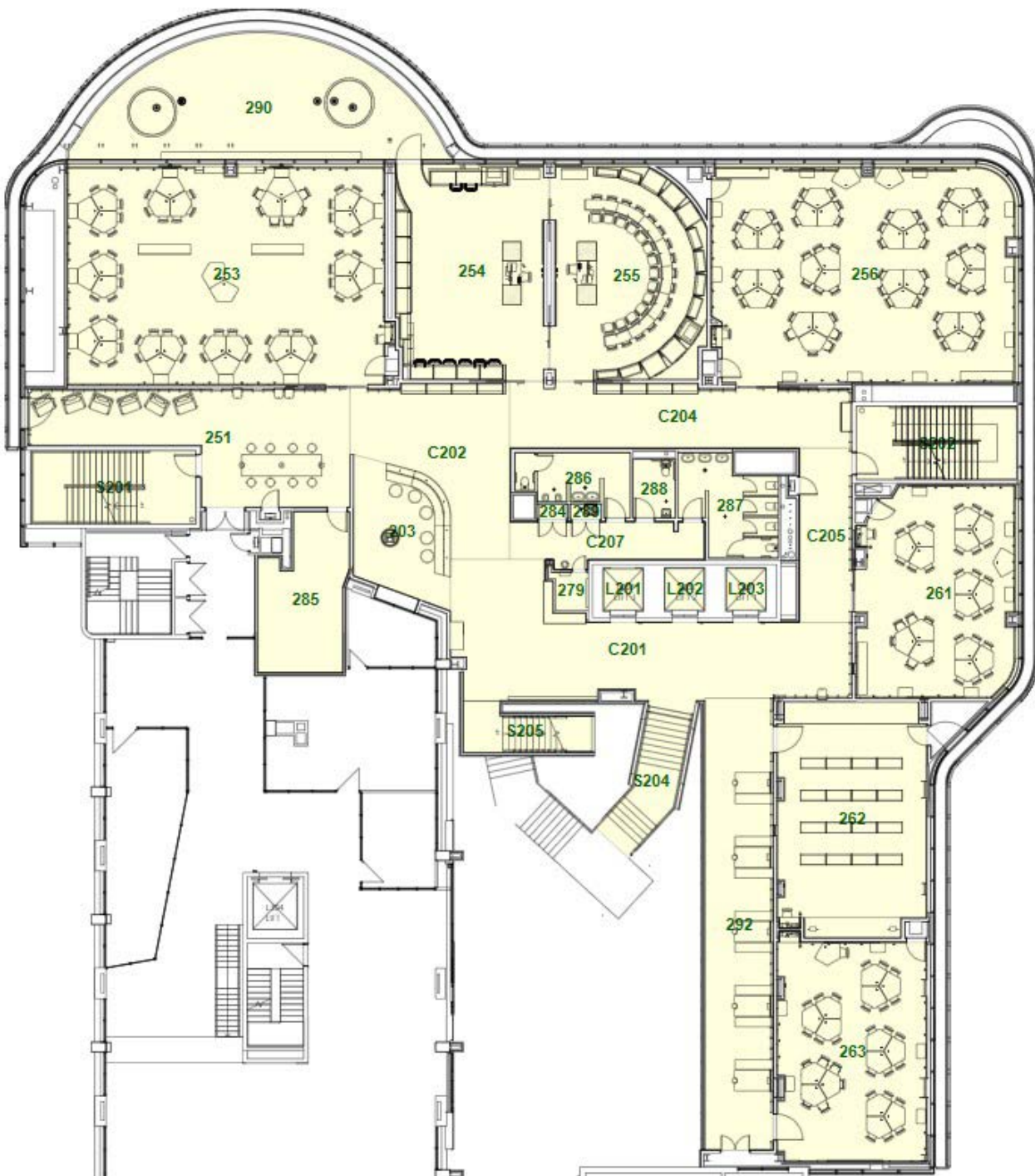




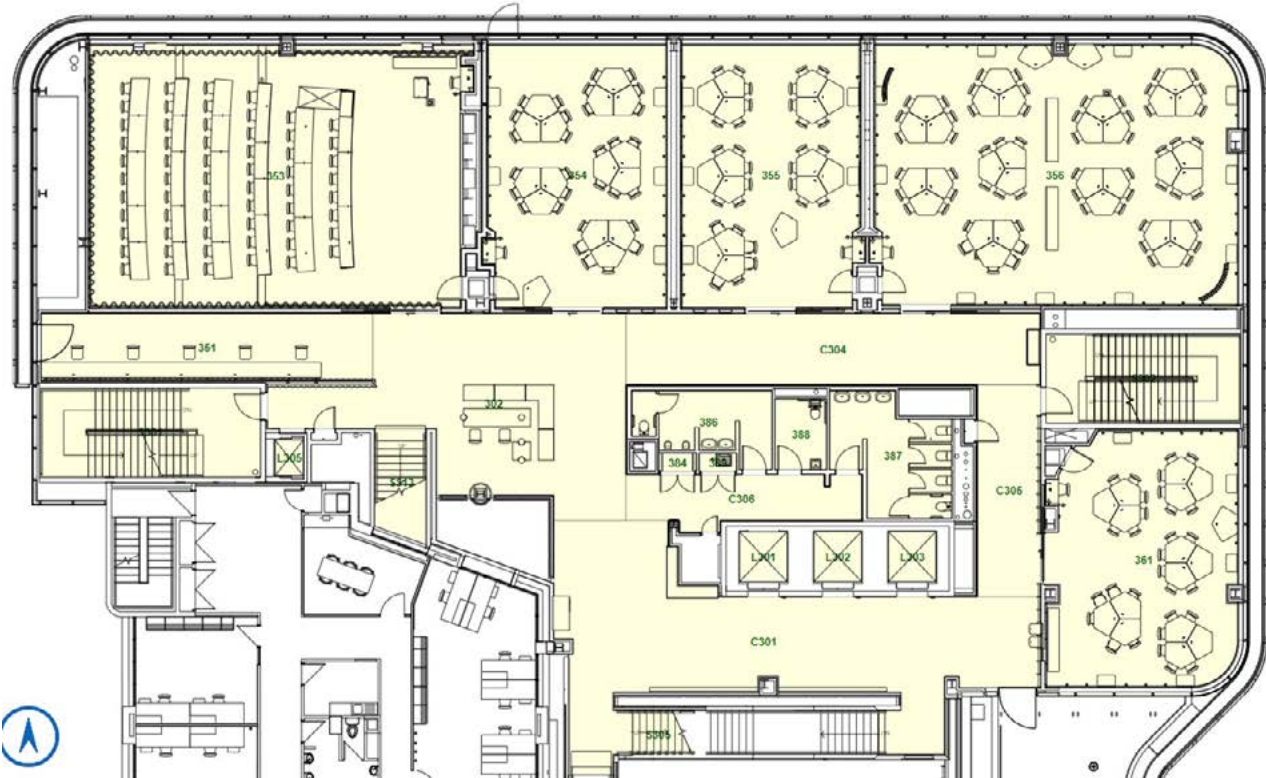
Arts West Building, Level 1



Arts West Building, Level 2

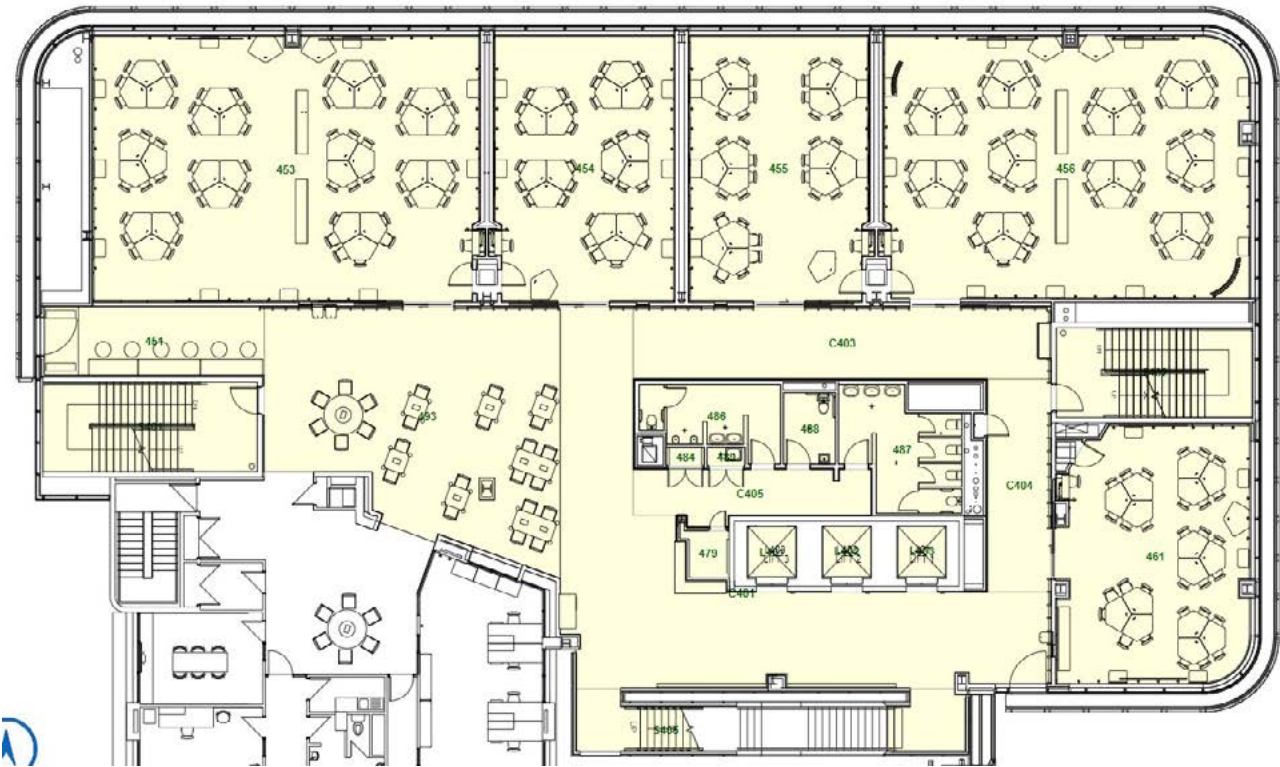


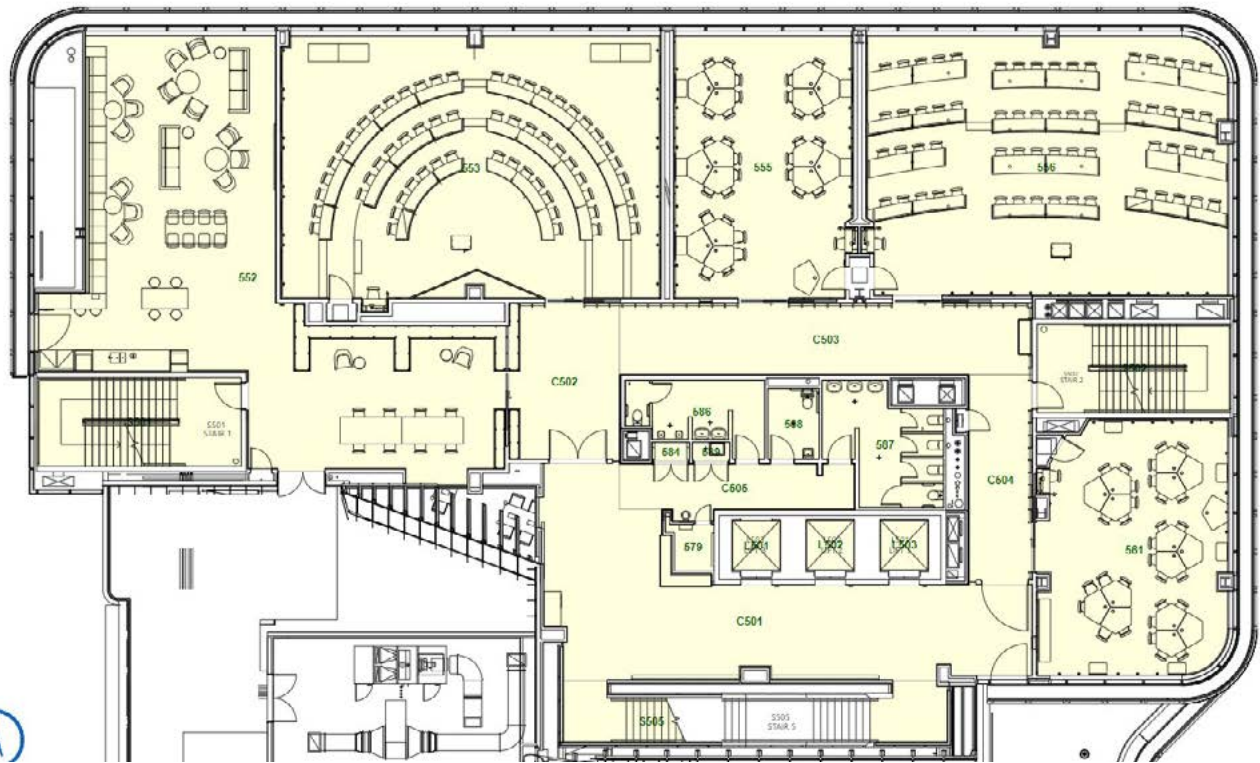
Arts West Building, Level 3





Arts West Building, Level 4





# Melbourne

Set on the shores of picturesque Port Phillip Bay is Melbourne; the city where creativity and innovation come together to deliver great events, exciting places to explore and cutting-edge advancements that are globally acclaimed.

Melbourne is easy to navigate and perfect to explore on foot or via our extensive transport network. It invites delegates to discover its creative culture, expressed in its food, fashion, events, arts and music scene.

For those wanting to explore further afield, the unique natural beauty of regional Victoria is just a short trip away. Inspiring day trips are waiting to be enjoyed just over an hour from the city centre. Discover some of Victoria's rugged and dramatic coastlines, incredible food and boutique wineries, wellbeing experiences and charming regional villages.

For more details on things to do in Melbourne you can download a free and comprehensive (over 300 pages) e-book published by Lonely Planet on Accessibility in Melbourne [here](#). For additional information on Melbourne as well as sights and activities outside the city, please [click here](#) and on the orange button immediately below:

## Travel

TASA 2022 delegates can access the University of Melbourne by car, tram, or train.

## Getting to Melbourne

Getting to and from Melbourne Airport to the Campus is very simple. There are a few options to consider. Melbourne Airport sits in the outer suburb of Tullamarine, about 25km northwest of the Melbourne city centre. Melbourne Airport (MEL) is the primary airport serving Melbourne with four terminals handling domestic and international flights.

Please refer to the Melbourne Airport website for further information.

## SkyBus

SkyBus offers a shuttle bus service from the Melbourne Airport to Melbourne City. Visit the SkyBus website for service updates and timetables. There are several ways to purchase a Melbourne City Express ticket. You can purchase online, the SkyBus App, via the touch screen kiosks located at each terminal or in person at their ticket booths. The Melbourne City Express operates between 04:30 – midnight, 7 days a week.

Ticket cost:

- One way - \$19.75
- Return - \$32.00

This city express bus runs only to and from Melbourne Airport and Southern Cross Station. Southern Cross Station is located with a short walk only 10 – 15-minute walk.



## Airport Transfers

Melbourne Airport is located 20 km or 25 minutes from central Melbourne.

Melbourne Airport (Tullamarine)

SkyBus operates from two locations at Melbourne Airport right outside arrivals at:

- Terminal T1 – serving Qantas Domestic, QantasLink and Jetstar Domestic.
- Terminal T2 – passengers arriving at the international terminal can catch SkyBus kerbside at T1 or T3, which are only a few steps away.
- Terminal T3 – serving Virgin Blue Domestic, Tiger Airways, Regional Express, and all International flights
- Terminal T4 – passengers arriving on Tiger Airways can catch SkyBus kerbside at T3, which is only a few steps away.

## Melbourne City/Southern Cross Station

The SkyBus city terminal is located undercover at Southern Cross Station, near the corner of Bourke Street and Spencer Street. [www.skybus.com.au](http://www.skybus.com.au)

Please refer to the SkyBus Melbourne City website for further information.

## Getting around Melbourne

Melbourne is a compact city best explored on foot where your sense of discovery is heightened by the unique spaces, experiences and hidden gems often stumbled upon along the way. Thanks to its grid layout, navigating is easy and made more inviting by its smart connectivity.

The city encompasses an extensive public transport network, accessible taxi services and caters for travel to destinations further afield through numerous tour operators.

myki is the smart card ticketing system for trains, trams and buses.

myki Explorer includes a ready-to-use myki card with one day's unlimited travel on trains, trams and buses in metropolitan Melbourne, handy maps for trains, trams and the city centre, plus access and discounts to a range of exciting experience offers across Victoria.

To travel into myki enabled areas of regional Victoria, or if you are in town for longer than one day, you can top up your myki at hundreds of shops (including all 7-Eleven stores), myki machines, station ticket offices or online.

For more information head to myki Explorer.

## Free City Tram

The Free Tram Zone in Melbourne's CBD was introduced on 1 January 2015, making it easier for commuters and tourists to move around the city. The principal boundaries of the Free Tram Zone are Spring Street, Flinders Street and La Trobe Street. Additionally, the tram routes

along Victoria Street, William Street and Elizabeth Street that surround Victoria Market are also included as well as the Docklands area.

### **Download the Free Tram Zone on the Maps page.**

All stops within the zone are clearly marked and tram drivers will make regular announcements when approaching the zone boundaries. Zone boundaries are signed and free tram zone maps are across the network.

If your tram journey is exclusively within the zone, travel is free, meaning you do not need to touch on with a myki.

### **Climate**

Melbourne may be known for its fickle weather - the city has been described as having four seasons in one day - but it can still be enjoyed all year round.

TASA 2022 will be held during the cross over between spring and summer.

During spring average temperatures range from 9.6 - 19.6°C. The start of summer generally has temperatures in the low 20°C.

### **Shopping**

Shops in Melbourne open from 9.00am to 5.30pm during the week with late night shopping on Thursday and Friday nights. On Saturday, most shops open from 9.00am to 5.00pm. On Sunday shops are open from 10.00am to 5.00pm.

### **Useful Links**

[Top 10 things to do in Melbourne](#)

[Local dining options](#)

[General information about Melbourne](#)

[Travel information for getting around](#)

# Sustainability

TASA 2022, respects our relationship with the environment and we openly acknowledge the adverse effects events may have when not conscientiously managed. Thus, sustainability is at the fore of every decision we make. At the conference we encourage all our delegates to be eco-friendly and sustainable for the benefit of our environment and community.

## Travel and Transport

We recommend purchasing of carbon offsets for travel to and from the event.

Travel and access to events and venues includes and prioritises public transport.

Directions for train, bus and light rail timetables and details of shuttle buses are included on the conference website here. [https://tasa.org.au/content.aspx?page\\_id=22&club\\_id=671860&module\\_id=523280](https://tasa.org.au/content.aspx?page_id=22&club_id=671860&module_id=523280)

Trams are free in the city of Melbourne.

## Recycling and Waste Management

We recommend avoiding the use of plastic and plastic bags. Please note that biodegradable plastic is not always compostable, even when made from plant-based materials.

Reduce packaging material; ensure packaging materials used are reusable or recyclable.

The conference will utilise minimal printing; program books will be available electronically via the conference website and mobile app.

# Program



The Australian Sociological Association Conference  
28 Nov - 2 Dec 2022  
University of Melbourne



Monday 28 November	Tuesday 29 November	Wednesday 30 November	Thursday 1 December	Friday 2 December
	Postgraduate Day	Registration Open		
	PG Opening & Welcome	Women's Breakfast		
Executive Meeting		Keynote Sessions		
	Morning Tea			
	PG Keynote Session & Bursary presentations	Concurrent & Panel Sessions	Concurrent & Panel Sessions	Concurrent & Panel Sessions
	LUNCH			
	PG Mentoring Session	Thematic Group Conveners' meeting & Professoriate meeting	Thematic Group Meetings & HSR incoming Editorial meeting	Thematic Group Meetings
		PG Thematic Groups Session	Concurrent & Panel Sessions	Concurrent & Panel Sessions
	Remembering Stephen Castles & Book Launches			
	PG Day End	HSR outgoing Editorial meeting	Afternoon Tea	
		Concurrent & Panel Sessions	Presidential Address	Concurrent & Panel Sessions
			AGM	
	JoS Editorial Meeting	Day End		
	Welcome Reception	Queer Drinks	Conference Dinner	CHASS Farewell Event

	<p>The Australian Sociological Association Conference (TASA) 28 Nov - 2 Dec 2022 University of Melbourne</p>	
	Tuesday 29 November 2022	
08:00 - 09:00	Registration Open (open from 08:00 - 18:30): Arts West Foyer - Ground level	08:00 - 09:00
09:00 - 10:00	<p>Opening &amp; Welcome <i>Early Career Researchers - Briefchat about careers</i> Catriona Stevens and Brittany Ralph</p>	09:00 - 10:00
10:00 - 10:30	Morning Tea	10:00 - 10:30
10:30 - 12:00	<p>Keynote Session <i>My life as an academic: Practical suggestions to make it work</i> Sharyn Roach Anleu</p>	10:30 - 12:00
12:00 - 12:10	Bursary Presentations	12:00 - 12:10
12:10 - 13:30	<p>Lunch &amp; the chance of attending a Congress event: <i>Social ventures and the translation of humanities, arts and social sciences research</i> (12:30pm- 1:30pm Kathleen Fitzpatrick Theatre)</p>	12:10 - 13:30
13:30 - 14:30	Mentoring Session	13:30 - 14:30
14:30 - 15:30	Thematic Groups	14:30 - 15:30
15:30	Day End	15:30
	Arts West (Foyer - Ground Level)	
16:30 - 18:30	Welcome Reception & Registration	16:30 - 18:30



Wednesday 30 November 2022

The Australian Sociological Association Conference (TASA)  
28 Nov - 2 Dec 2022  
University of Melbourne



Wednesday 30 November 2022																	
	QUIET SPACE ARTS WEST, RESEARCH LOUNGE, Level 5, Room 552		FAITH SPACE OLD ARTS BUILDING, Level 2, Room 210		FAMILY SPACE OLD ARTS BUILDING, Level 2, Room 254		LACTATION SPACE OLD ARTS BUILDING, Level 2, call Sally on 0425 728 992 for access										
07:00 - 17:00	Registration - Arts West (Atrium - Ground Level)																07:00 - 17:00
07:30 - 08:45	Women's Breakfast (Arts Hall, L3, Rm. 225, Old Ambulance, University of Melbourne) Sponsor: Carol White & Douglass women, Mervyn																07:30 - 08:45
08:00 - 08:30	Conference Welcome & Welcome to Country (Murrumbidgee Land Council) - Arts West (Edith Piaf Patrick Theatre - Basement)																08:00 - 08:30
08:30 - 10:30	Arts West (Kathleen Fitzpatrick Theatre - Basement) Keynote Presentation 1: Sociology of the Edge Dr Samanthia Connelly (Australian Women's Rights Commission) Chair: Dr Catherine Hastings (Macquarie University)																08:30 - 10:30
10:30 - 11:00	Morning Tea - Arts West (Atrium - Ground Level) TASA Tea-time - Room 361																10:30 - 11:00
11:00 - 12:30	Concurrent Sessions & Panels																11:00 - 12:30
	Room 361 Chair: Julie Peters	Room 355 Chair: Lutfun Nahar Late	Room 253 Chair: Leah Williams Vestary	Room 453 Chair: Karim Delbar	Room 256 Chair: Karyn Drysdale	Room 361 Chair: Rick Spencer	Room 355 Chair: Karen Mills	Room 355 Chair: Neville Buch	Room 454 Chair: Zoe Sellen	Room 455 Chair: Linda Marsden	Room 461 Chair: Brady Roberts	Room 553 Chair: Sophie Hickley & Catherine Hastings	Room 556 Chair: Adela Padilla	Room 561 Chair: Maria Franklin			
	Cultural Sociology Thematic Group Theme - Beauty Work, Suburbans	Sociology of Work, Labour & Economy Thematic Group Theme - Gig Economy	Migration, Ethnicity and Multiculturalism Thematic Group Theme - Race, Media & COVID-19	Migration, Ethnicity and Multiculturalism Thematic Group Theme - Employment and Civic Engagement	Gender & Sexuality Thematic Group Theme - Gender and Sexuality in public	Sociology of Media Thematic Group	Health Sociology Thematic Group Theme - Healthcare workers, knowledge and epistemology - 1	Sociology of Education Thematic Group Theme - School communities	Sociology & Animals Thematic Group	Sociology of Youth Thematic Group Theme - Care and Intimacy	Sociology of Youth Thematic Group Theme - Politics and citizenship	Panel - Sociology for real-life Institutional change: Challenges and transformations	Panel - 2023 FIFA Women's World Cup: A Triumphant Moment or Business as Usual?	Sociology & Ageing Thematic Group Theme - Community and connection			
	393: Decade bodies or social bodies? What qualitative interviews reveal about the gaps in current research on migrant beauty cultures Aimee Effing-Thang	2: 86' Work And Earnings Outcomes: The Case Of Rob Helling Drivers In Indonesia Oliver Farnsworth & Ima Moos-Rad	286: Asian Australians' Experiences Of Online Racism During The COVID-19 Pandemic Alanna Kemp, Hilda Demara, Rachel Sharpey & Nicole Allen	16: Male young people of African background: psycho-entrepreneurial plans for success Farida Foster	198: The courage to go in? - grief, fear, and white femininities and social entrepreneurship Helen Taylor	358: Desire for Omnipresence: A Sociological Introduction to a New Conceptual Tool Camille Macdonald-Aldar	434: Jack of All Trades and Master of None? Exploring Social Work's Epistemic Contribution to Team-Based Health Care Hannah Coates, Michelle Nichols & Corinne Brown	334: Working together with communities: How bureaucratic social embeddedness and collaborative network development education policy interaction in the local level? Rita W. Wilkerson	336: Navigating pet affordability accommodation in South Australia Zoe Sellen, Beverley Clarke, Corinne Ross & Corinne Star	369: Understanding transgender models of care: Examining the care for young people provide informal support to peers during tough times Benjamin Hordell & Jessebe Muehlenbachs	366: Beyond Angry White Men: Social Democratic Imaginations as an Alternative to Agreed Endorsement Nathan Manning & George Stefanovic	59: Applied sociology, embedded sociologists Nick J Fox	363: The FIFA Women's World Cup 2023, narratives of progress and gender equity in sport Flora Maclean	136: Neoliberal violence and the pain of loneliness in community centres in SA Ben Lohmeyer & Rex Wong			
	574: New Materialisms and Gender Consciousness in Alternative Kawaii Fashion Communities: Negotiating Materialisms and Gender Consciousness in Kawaii Fashion, 1970s Nagen Rose	257: New Tech, old exploitation: Migrant labour, algorithmic control and mythical autonomy in the gig economy Lutfun Nahar Late	285: Social media constructions of Muslim and Asian Australian during COVID-19: Dominant discourses and anti-racist resistance Ashleigh New	221: Employment Experiences of Pakistani Migrant Women in the Australian Labour Market Fahma Yamin, Alesha Puterman & Helen Forbes-McNevett	357: Moral panic and confabulation: A coping review of the discourse used in same sex marriage debates Javier Mills	200: Escape in fantasy novels: reading sovereignty and identity formation James Holmes	58: Towards ethical multiplicity in new back pain care: Practising beyond the biomedical perspectives of back pain Karinne Macdonald, Rebecca Olin & Jenny Sedell	433: Marginalised perspectives of death, shame and care Carla Kennedy	371: Why Now Will Be Okay: Exploring the seemingly contradictory identity of vegan meat in Australia Alexander Hill	340: Intimate life in the digital era: A subaltern, fast-paced, short-lived, and unclear arena Lyndsey Hewitt Ockerson	154: Youth citizenship frameworks: Expanding conceptions of the young citizen Bronwyn Wood	172: Applying social sociology from knowledge to practice as an applied sociologist Suzanne Aguilera	228: Enacting gender equity and inclusion through the Women's World Cup: Feminist questions about difference Shirley Reddy & Sally Shaw	168: Social Connection Support: Food for Residential Aged Care Facilities Janelle Dine			
12:30 - 13:30	Lunch - Arts West (Atrium, Ground Level) Thematic Group Conveners Meeting (Room 253) & Professionals Meeting - The Status of Sociology (Room 156)																12:30 - 13:30
13:30 - 15:00	Concurrent Sessions & Panels																13:30 - 15:00
	Room 361 Chair: Mark Jennings	Room 355 Chair: Ashleigh New	Room 253 Chair: Catherine Stevens	Room 263 Chair: Key Cook	Room 361 Chair: David Rafter	Room 355 Chair: Sam Humphrey	Room 355 Chair: Natalie Myerovich Chalk & Christine Carden	Room 453 Chair: Sandra Spall	Room 456 Chair: Pam Wilson	Room 461 Chair: Dennis Aguilera	Room 553 Chair: Lulu Roberts	Room 556 Chair: Steve Roberts	Room 561 Chair: Neville Buch				
	Cultural Sociology Thematic Group Theme - Music	Migration, Ethnicity and Multiculturalism Thematic Group Theme - Migration, Environment & Sustainability	Migration, Ethnicity and Multiculturalism Thematic Group Theme - Care & Intersecting Identities	Families & Relationships Thematic Group Theme - Reproductive labour and uncertain futures	Rural & Media Sociology	Health Sociology Thematic Group Theme - Healthcare workers, knowledge and epistemology - 2	Crime & Governance Thematic Group	Sociology of Sport & Leisure Thematic Group Theme - Social & cultural change through sport - 1	Sociology of Youth Thematic Group Theme - Culture and the self	Applied Sociology Thematic Group Theme - Public policy poverty and welfare	Panel - Globalisation, neo-liberalism, conflict, and religious religiosity: The Taliban as a Phenomenon and a Movement	Panel - Intergenerational connections and challenges in the asset economy	Sociology of Religion Thematic Group Theme - No religion				
	392: Under the big tent: Uncovering difference and conflict in the live music sector Ben Green	210: The red-o-giver grass of the Tropics - a migrant's perspective Rita Delbour	18: Live across class: migration, investment and shifting class dynamics in Australia Rose Butler & Eve Vincent	227: Reproductive Reproduction babies, bustles and crinoline futures Mary Lou Rasmussen & Celia Roberts	5: Cohesion, cohesion and the adaptation: The Case of Racialised in Australia Helen Forbes-McNevett & Alesha Gohari	312: The spectre at the feast: Narrating aboriginal experiences and subjectivity in Victorian through "the" and "white" Matt Wade	397: Confronting in crisis: Confronting a slow violence with their potential connectivity in memory, desire, and violence Matt Wade	132: Contextual factors influencing social capital development for migrant and minority ethnic background adolescents in Victorian youth clubs Dana Young, Karen Black & Lisa Gilhe	293: Understanding self-writing apps in youth visual digital culture Julia Coffey, Amy Roberts, Alesha Rose & Rosalind Gill	362: Compulsory Income Management in Australia and New Zealand: More harm than good? Philip Mendes, Michelle Peters & Zoe Tams	72: Narratives of justice in former FATA Merve Chene	41: Explaining Social Class Identification: The Role Of Education, Occupation, And Assets Lisa Adkins, Sarah Bryant, Sarah Cameron & Martin Hastings	145: 'There is more voice given to me' - Gender (In)equality in Australia (Sub 143) Rita Shale				
	435: Basic Income, Cultural Labour, and the Music Industry: Prevalence and Current Experiments Sam Whiting	196: Racism and public trust in people: Institutions, democracy and debate across a multicultural context Anastasia Dine	12: Contesting Chinese-ness: new Chinese migrants, cultural identity and the class divide in Singapore Sylvia Ang	29: Young parents and digital technologies: Navigating pathways to enhance agency for vulnerable mothers Feresha Zhai, Key Cook & Milovan Sait	427: Aging Bodies, Rural Spaces, Precarious Lives Gilbert Briggs	141: Interrupting Care Relations: Promoting Psychological Support J. L. Latham	196: From Agony to Telegram: the social organization of drug trading through encrypted messaging apps Natalie Dewey	90: STARS: Standing Together Against Racism in Sport - a community sports club anti-racism intervention Dana Young	190: Manifestations and performances of digital youth in India: Exploring the myth of popular music and society Deepika Chatterjee	186: Challenging poverty narratives in place-based histories Margaret Deane	120: How will ideology fare in the Taliban's campaign against women and single motherhood?	274: Assets, Young Adulthood and the Remaking of Inter-generational Connections (Sub 377) Den Woodman & Quentin Haire	380: Mark 'No Religion': The Consequences of Religious Belief Perception (Sub 377) Rita Shale				
15:00 - 15:30	Afternoon Tea - Arts West (Atrium, Ground Level) JSE Editorial Meeting (ongoing team) Room 254																15:00 - 15:30
15:30 - 17:00	Concurrent Sessions & Panels																15:30 - 17:00
	Room 361 Chair: Sonia Martin	Room 355 Chair: Tanya Leahy	Room 253 Chair: Karen Black	Room 263 Chair: Rachel Mendelsohn	Room 361 Chair: Sandra Spall	Room 355 Chair: Sam Humphrey	Room 355 Chair: Natalie Myerovich Chalk & Christine Carden	Room 453 Chair: Sandra Spall	Room 456 Chair: Pam Wilson	Room 461 Chair: Dennis Aguilera	Room 553 Chair: Lulu Roberts	Room 556 Chair: Steve Roberts	Room 561 Chair: Neville Buch				
	Social Stratification Thematic Group Theme - Making sense of modernity	Social Theory Thematic Group Theme - Making sense of modernity	Migration, Ethnicity and Multiculturalism Thematic Group Theme - Language & Education	Critical Indigenous Studies Thematic Group Theme - Language & Education	Rural & Media Sociology	Health Sociology Thematic Group Theme - Healthcare policy and practice	Risk Societies Thematic Group	Sociology of Sport & Leisure Thematic Group Theme - Social & cultural change through sport - 2	Sociology of Youth Thematic Group Theme - Discourse and lived experience	Panel - Healthy societies after the pandemic: How do we "build back better"?	Panel - Young people and the transformation of values and society (in sport) pandemic times Higgins Don Life Future	Sociology of Religion Thematic Group Theme - Youth Focused					
	35: How do Australian politicians frame poverty? Philip Mendes & Steven Roche	438: The Sovereign Individual Refused? Neoliberalism and their aftermath Rylee Milburn	186: A 'cultural' misunderstanding? Comparing 'freedom' and 'freedom' perspectives on schooling and housing Rylee Milburn	217: Indigenous housing displacement in Australian and North American cities Delia Howard-Wagner	5: Cohesion, cohesion and the adaptation: The Case of Racialised in Australia Helen Forbes-McNevett & Alesha Gohari	312: The spectre at the feast: Narrating aboriginal experiences and subjectivity in Victorian through "the" and "white" Matt Wade	397: Confronting in crisis: Confronting a slow violence with their potential connectivity in memory, desire, and violence Matt Wade	132: Contextual factors influencing social capital development for migrant and minority ethnic background adolescents in Victorian youth clubs Dana Young, Karen Black & Lisa Gilhe	293: Understanding self-writing apps in youth visual digital culture Julia Coffey, Amy Roberts, Alesha Rose & Rosalind Gill	362: Compulsory Income Management in Australia and New Zealand: More harm than good? Philip Mendes, Michelle Peters & Zoe Tams	72: Narratives of justice in former FATA Merve Chene	41: Explaining Social Class Identification: The Role Of Education, Occupation, And Assets Lisa Adkins, Sarah Bryant, Sarah Cameron & Martin Hastings	145: 'There is more voice given to me' - Gender (In)equality in Australia (Sub 143) Rita Shale				
	225: Community Attitudes towards welfare Sonia Martin & Peter Butcherworth	442: Historical Sociology of the 'Crisis' in Victorian Education: Mapping 1850-2022 and Beyond Neville Buch	218: Linguistic diversity and the challenges of health communication: A digital solution? Rebecca Forsyth, Kristine Arnold, Brad Abbott & Andrew Campbell	411: Truth telling about a settler colonial legacy: Reconciling possibilities? Vivienne Barclay	390: Social connection in the digital age Milovan Sait	338: Peer support and social connectedness in health professionals: A case of online communities Rebecca Forsyth, Kristine Arnold, Brad Abbott & Andrew Campbell	313: Automating Neoliberal Racism: Pursuing the Race in the Digital Age Alesha Rose	15: It's time to stop playing field for women in football? Ruth Brown, Ruth Brown & Hayley Treasewy		187: Regulating Self-Presentation Through Hair: An Analysis of Uniform Policies in Queensland High Schools Rylee Milburn	339: Poetic Inquiry as a research methodology Vicki Toller	186: Comparing Photo: The Taliban and Lashkar-e Taiba Suzanne Aguilera	49: Intergenerational transfers and the risk of older abuse: the need for reform in the asset economy debate Pats S. Cook & Julia Cook				
15:30 - 17:00	Concurrent Sessions & Panels																15:30 - 17:00
	Room 361 Chair: Sonia Martin	Room 355 Chair: Tanya Leahy	Room 253 Chair: Karen Black	Room 263 Chair: Rachel Mendelsohn	Room 361 Chair: Sandra Spall	Room 355 Chair: Sam Humphrey	Room 355 Chair: Natalie Myerovich Chalk & Christine Carden	Room 453 Chair: Sandra Spall	Room 456 Chair: Pam Wilson	Room 461 Chair: Dennis Aguilera	Room 553 Chair: Lulu Roberts	Room 556 Chair: Steve Roberts	Room 561 Chair: Neville Buch				
	Social Stratification Thematic Group Theme - Making sense of modernity	Social Theory Thematic Group Theme - Making sense of modernity	Migration, Ethnicity and Multiculturalism Thematic Group Theme - Language & Education	Critical Indigenous Studies Thematic Group Theme - Language & Education	Rural & Media Sociology	Health Sociology Thematic Group Theme - Healthcare policy and practice	Risk Societies Thematic Group	Sociology of Sport & Leisure Thematic Group Theme - Social & cultural change through sport - 2	Sociology of Youth Thematic Group Theme - Discourse and lived experience	Panel - Healthy societies after the pandemic: How do we "build back better"?	Panel - Young people and the transformation of values and society (in sport) pandemic times Higgins Don Life Future	Sociology of Religion Thematic Group Theme - Youth Focused					
	35: How do Australian politicians frame poverty? Philip Mendes & Steven Roche	438: The Sovereign Individual Refused? Neoliberalism and their aftermath Rylee Milburn	186: A 'cultural' misunderstanding? Comparing 'freedom' and 'freedom' perspectives on schooling and housing Rylee Milburn	217: Indigenous housing displacement in Australian and North American cities Delia Howard-Wagner	5: Cohesion, cohesion and the adaptation: The Case of Racialised in Australia Helen Forbes-McNevett & Alesha Gohari	312: The spectre at the feast: Narrating aboriginal experiences and subjectivity in Victorian through "the" and "white" Matt Wade	397: Confronting in crisis: Confronting a slow violence with their potential connectivity in memory, desire, and violence Matt Wade	132: Contextual factors influencing social capital development for migrant and minority ethnic background adolescents in Victorian youth clubs Dana Young, Karen Black & Lisa Gilhe	293: Understanding self-writing apps in youth visual digital culture Julia Coffey, Amy Roberts, Alesha Rose & Rosalind Gill	362: Compulsory Income Management in Australia and New Zealand: More harm than good? Philip Mendes, Michelle Peters & Zoe Tams	72: Narratives of justice in former FATA Merve Chene	41: Explaining Social Class Identification: The Role Of Education, Occupation, And Assets Lisa Adkins, Sarah Bryant, Sarah Cameron & Martin Hastings	145: 'There is more voice given to me' - Gender (In)equality in Australia (Sub 143) Rita Shale				
	225: Community Attitudes towards welfare Sonia Martin & Peter Butcherworth	442: Historical Sociology of the 'Crisis' in Victorian Education: Mapping 1850-2022 and Beyond Neville Buch	218: Linguistic diversity and the challenges of health communication: A digital solution? Rebecca Forsyth, Kristine Arnold, Brad Abbott & Andrew Campbell	411: Truth telling about a settler colonial legacy: Reconciling possibilities? Vivienne Barclay	390: Social connection in the digital age Milovan Sait	338: Peer support and social connectedness in health professionals: A case of online communities Rebecca Forsyth, Kristine Arnold, Brad Abbott & Andrew Campbell	313: Automating Neoliberal Racism: Pursuing the Race in the Digital Age Alesha Rose	15: It's time to stop playing field for women in football? Ruth Brown, Ruth Brown & Hayley Treasewy		187: Regulating Self-Presentation Through Hair: An Analysis of Uniform Policies in Queensland High Schools Rylee Milburn	339: Poetic Inquiry as a research methodology Vicki Toller	186: Comparing Photo: The Taliban and Lashkar-e Taiba Suzanne Aguilera	49: Intergenerational transfers and the risk of older abuse: the need for reform in the asset economy debate Pats S. Cook & Julia Cook				
15:30 - 17:00	Concurrent Sessions & Panels																15:30 - 17:00
	Room 361 Chair: Sonia Martin	Room 355 Chair: Tanya Leahy	Room 253 Chair: Karen Black	Room 263 Chair: Rachel Mendelsohn	Room 361 Chair: Sandra Spall	Room 355 Chair: Sam Humphrey	Room 355 Chair: Natalie Myerovich Chalk & Christine Carden	Room 453 Chair: Sandra Spall	Room 456 Chair: Pam Wilson	Room 461 Chair: Dennis Aguilera	Room 553 Chair: Lulu Roberts	Room 556 Chair: Steve Roberts	Room 561 Chair: Neville Buch				
	Social Stratification Thematic Group Theme - Making sense of modernity	Social Theory Thematic Group Theme - Making sense of modernity	Migration, Ethnicity and Multiculturalism Thematic Group Theme - Language & Education	Critical Indigenous Studies Thematic Group Theme - Language & Education	Rural & Media Sociology	Health Sociology Thematic Group Theme - Healthcare policy and practice	Risk Societies Thematic Group	Sociology of Sport & Leisure Thematic Group Theme - Social & cultural change through sport - 2	Sociology of Youth Thematic Group Theme - Discourse and lived experience	Panel - Healthy societies after the pandemic: How do we "build back better"?	Panel - Young people and the transformation of values and society (in sport) pandemic times Higgins Don Life Future	Sociology of Religion Thematic Group Theme - Youth Focused					
	35: How do Australian politicians frame poverty? Philip Mendes & Steven Roche	438: The Sovereign Individual Refused? Neoliberalism and their aftermath Rylee Milburn	186: A 'cultural' misunderstanding? Comparing 'freedom' and 'freedom' perspectives on schooling and housing Rylee Milburn	217: Indigenous housing displacement in Australian and North American cities Delia Howard-Wagner	5: Cohesion, cohesion and the adaptation: The Case of Racialised in Australia Helen Forbes-McNevett & Alesha Gohari	312: The spectre at the feast: Narrating aboriginal experiences and subjectivity in Victorian through "the" and "white" Matt Wade	397: Confronting in crisis: Confronting a slow violence with their potential connectivity in memory, desire, and violence Matt Wade	132: Contextual factors influencing social capital development for migrant and minority ethnic background adolescents in Victorian youth clubs Dana Young, Karen Black & Lisa Gilhe	293: Understanding self-writing apps in youth visual digital culture Julia Coffey, Amy Roberts, Alesha Rose & Rosalind Gill	362: Compulsory Income Management in Australia and New Zealand: More harm than good? Philip Mendes, Michelle Peters & Zoe Tams	72: Narratives of justice in former FATA Merve Chene	41: Explaining Social Class Identification: The Role Of Education, Occupation, And Assets Lisa Adkins, Sarah Bryant, Sarah Cameron & Martin Hastings	145: 'There is more voice given to me' - Gender (In)equality in Australia (Sub 143) Rita Shale				
	225: Community Attitudes towards welfare Sonia Martin & Peter Butcherworth	442: Historical Sociology of the 'Crisis' in Victorian Education: Mapping 1850-2022 and Beyond Neville Buch	218: Linguistic diversity and the challenges of health communication: A digital solution? Rebecca Forsyth, Kristine Arnold, Brad Abbott & Andrew Campbell	411: Truth telling about a settler colonial legacy: Reconciling possibilities? Vivienne Barclay	390: Social connection in the digital age Milovan Sait	338: Peer support and social connectedness in health professionals: A case of online communities Rebecca Forsyth, Kristine Arnold, Brad Abbott & Andrew Campbell	313: Automating Neoliberal Racism: Pursuing the Race in the Digital Age Alesha Rose	15: It's time to stop playing field for women in football? Ruth Brown, Ruth Brown & Hayley Treasewy		187: Regulating Self-Presentation Through Hair: An Analysis of Uniform Policies in Queensland High Schools Rylee Milburn	339: Poetic Inquiry as a research methodology Vicki Toller	186: Comparing Photo: The Taliban and Lashkar-e Taiba Suzanne Aguilera	49: Intergenerational transfers and the risk of older abuse: the need for reform in the asset economy debate Pats S. Cook & Julia Cook				
15:30 - 17:00	Concurrent Sessions & Panels																15:30 - 17:00
	Room 361 Chair: Sonia Martin	Room 355 Chair: Tanya Leahy	Room 253 Chair: Karen Black	Room 263 Chair: Rachel Mendelsohn	Room 361 Chair: Sandra Spall	Room 355 Chair: Sam Humphrey	Room 355 Chair: Natalie Myerovich Chalk & Christine Carden	Room 453 Chair: Sandra Spall	Room 456 Chair: Pam Wilson	Room 461 Chair: Dennis Aguilera	Room 553 Chair: Lulu Roberts	Room 556 Chair: Steve Roberts	Room 561 Chair: Neville Buch				
	Social Stratification Thematic Group Theme - Making sense of modernity	Social Theory Thematic Group Theme - Making sense of modernity	Migration, Ethnicity and Multiculturalism Thematic Group Theme - Language & Education	Critical Indigenous Studies Thematic Group Theme - Language & Education	Rural & Media Sociology	Health Sociology Thematic Group Theme - Healthcare policy and practice	Risk Societies Thematic Group	Sociology of Sport & Leisure Thematic Group Theme - Social & cultural change through sport - 2	Sociology of Youth Thematic Group Theme - Discourse and lived experience	Panel - Healthy societies after the pandemic: How do we "build back better"?	Panel - Young people and the transformation of values and society (in sport) pandemic times Higgins Don Life Future	Sociology of Religion Thematic Group Theme - Youth Focused					
	35: How do Australian politicians frame poverty? Philip Mendes & Steven Roche	438: The Sovereign Individual Refused? Neoliberalism and their aftermath Rylee Milburn	186: A 'cultural' misunderstanding? Comparing 'freedom' and 'freedom' perspectives on schooling and housing Rylee Milburn	217: Indigenous housing displacement in Australian and North American cities Delia Howard-Wagner	5: Cohesion, cohesion and the adaptation: The Case of Racialised in Australia Helen Forbes-McNevett & Alesha Gohari	312: The spectre at the feast: Narrating aboriginal experiences and subjectivity in Victorian through "the" and "white" Matt Wade	397: Confronting in crisis: Confronting a slow violence with their potential connectivity in memory, desire, and violence Matt Wade	132: Contextual factors influencing social capital development for migrant and minority ethnic background adolescents in Victorian youth clubs Dana Young, Karen Black & Lisa Gilhe	293: Understanding self-writing apps in youth visual digital culture Julia Coffey, Amy Roberts, Alesha Rose & Rosalind Gill	362: Compulsory Income Management in Australia and New Zealand: More harm than good? Philip Mendes, Michelle Peters & Zoe Tams	72: Narratives of justice in former FATA Merve Chene	41: Explaining Social Class Identification: The Role Of Education, Occupation, And Assets Lisa Adkins, Sarah Bryant, Sarah Cameron & Martin Hastings	145: 'There is more voice given to me' - Gender (In)equality in Australia (Sub 143) Rita Shale				
	225: Community Attitudes towards welfare Sonia Martin & Peter Butcherworth	442: Historical Sociology of the 'Crisis' in Victorian Education: Mapping 1850-2022 and Beyond Neville Buch	218: Linguistic diversity and the challenges of health communication: A digital solution? Rebecca Forsyth, Kristine Arnold, Brad Abbott & Andrew Campbell	411: Truth telling about a settler colonial legacy: Reconciling possibilities? Vivienne Barclay	390: Social connection in the digital age Milovan Sait	338: Peer support and social connectedness in health professionals: A case of online communities Rebecca Forsyth, Kristine Arnold, Brad Abbott & Andrew Campbell	313: Automating Neoliberal Racism: Pursuing the Race in the Digital Age Alesha Rose	15: It's time to stop playing field for women in football? Ruth Brown, Ruth Brown & Hayley Treasewy		187: Regulating Self-Presentation Through Hair: An Analysis of Uniform Policies in Queensland High Schools Rylee Milburn	339: Poetic Inquiry as a research methodology Vicki Toller	186: Comparing Photo: The Taliban and Lashkar-e Taiba Suzanne Aguilera	49: Intergenerational transfers and the risk of older abuse: the need for reform in the asset economy debate Pats S. Cook & Julia Cook				
15:30 - 17:00	Concurrent Sessions & Panels																15:30 - 17:00
	Room 361 Chair: Sonia Martin	Room 355 Chair: Tanya Leahy	Room 253 Chair: Karen Black	Room 263 Chair: Rachel Mendelsohn	Room 361 Chair: Sandra Spall	Room 355 Chair: Sam Humphrey	Room 355 Chair: Natalie Myerovich Chalk & Christine Carden	Room 453 Chair: Sandra Spall	Room 456 Chair: Pam Wilson	Room 461 Chair: Dennis Aguilera	Room 553 Chair: Lulu Roberts	Room 556 Chair: Steve Roberts	Room 561 Chair: Neville Buch				
	Social Stratification Thematic Group Theme - Making sense of modernity	Social Theory Thematic Group Theme - Making sense of modernity	Migration, Ethnicity and Multiculturalism Thematic Group Theme - Language & Education	Critical Indigenous Studies Thematic Group Theme - Language & Education	Rural & Media Sociology	Health Sociology Thematic Group Theme - Healthcare policy and practice	Risk Societies Thematic Group	Sociology of Sport & Leisure Thematic Group Theme - Social & cultural change through sport - 2	Sociology of Youth Thematic Group Theme - Discourse and lived experience	Panel - Healthy societies after the pandemic: How do we "build back better"?	Panel - Young people and the transformation of values and society (in sport) pandemic times Higgins Don Life Future	Sociology of Religion Thematic Group Theme - Youth Focused					
	35: How do Australian politicians frame poverty? Philip Mendes & Steven Roche	438: The Sovereign Individual Refused? Neoliberalism and their aftermath Rylee Milburn	186: A 'cultural' misunderstanding? Comparing 'freedom' and 'freedom' perspectives on schooling and housing Rylee Milburn	217: Indigenous housing displacement in Australian and North American cities Delia Howard-Wagner	5: Cohesion, cohesion and the adaptation: The Case of Racialised in Australia Helen Forbes-McNevett & Alesha Gohari	312: The spectre at the feast: Narrating aboriginal experiences and subjectivity in Victorian through "the" and "white" Matt Wade	397: Confronting in crisis: Confronting a slow violence with their potential connectivity in memory, desire, and violence Matt Wade	132: Contextual factors influencing social capital development for migrant and minority ethnic background adolescents in Victorian youth clubs Dana Young, Karen Black & Lisa Gilhe	293: Understanding self-writing apps in youth visual digital culture Julia Coffey, Amy Roberts, Alesha Rose & Rosalind Gill	362: Compulsory Income Management in Australia and New Zealand: More harm than good? Philip Mendes, Michelle Peters & Zoe Tams	72: Narratives of justice in former FATA Merve Chene	41: Explaining Social Class Identification: The Role Of Education, Occupation, And Assets Lisa Adkins, Sarah Bryant, Sarah Cameron & Martin Hastings	145: 'There is more voice given to me' - Gender (In)equality in Australia (Sub 143) Rita Shale				
	225: Community Attitudes towards welfare Sonia Martin & Peter Butcherworth	442: Historical Sociology of the 'Crisis' in Victorian Education: Mapping 1850-2022 and Beyond Neville Buch	218: Linguistic diversity and the challenges of health communication: A digital solution? Rebecca Forsyth, Kristine Arnold, Brad Abbott & Andrew Campbell	411: Truth telling about a settler colonial legacy: Reconciling possibilities? Vivienne Barclay	390: Social connection in the digital age Milovan Sait	338: Peer support and social connectedness in health professionals: A case of online communities Rebecca Forsyth, Kristine Arnold, Brad Abbott &											





Day End

# XX ISA World Congress of Sociology

**Melbourne, Australia | June 25-July 1, 2023**

Melbourne Convention and Exhibition Centre



**Resurgent Authoritarianism:**  
*Sociology of New Entanglements of  
Religions, Politics, and Economies*



[www.isa-sociology.org](http://www.isa-sociology.org)